

April 2010

New NWL in-practice analyser launched



NWL are happy to be launching the FDC 4000i clinical chemistry analyser at BSAVA Congress. We have looked long and hard for an analyser we could whole heartedly recommend for use in-practice and have eventually found this model, which is new to the UK.

The testing procedure is simple, remarkably rapid and analysis is fully automated, using reliable, slide-based technology with a robust QC system, so the possibility of error is minimised.

Slides can be purchased pre packaged into a choice of four profiles, or as separate packs.

There are 22 individual slides to test a wide range of parameters—plus a single slide to accurately assay Na, K and Cl all at once in only 1 minute!

NWL realise that in-practice testing has an important place when rapid, accurate results are essential and we are pleased to be able to extend the scope of our laboratory services to include the FDC 4000i.

For more information contact the team at NWL Poulton on 01253 899215.

QA quandry...

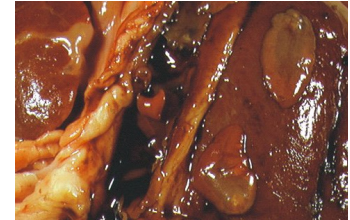
Sample identification is a key factor in laboratory quality assurance—hence our repeated plea for sample tubes to be properly labelled. On occasion we have to don our deerstalkers for our Sherlock Holmes impression when anonymous samples arrive at the lab, or when purportedly canine blood for haematology turns out to have feline results—or vice versa—but a totally new situation arose last month, which we would have great difficulty addressing!



When some owners were asked to bring their pet back in to our client's practice for resampling because the first blood test results were so unexpected, they admitted that previously they had brought the wrong cat!



Fluke in cattle



Fascioliasis continues to be a geographically widespread problem. We recently performed histopathology on liver from a valuable dairy heifer who died just a few weeks prior to calving. Chronic fibrosing hepatopathy, likely to relate to previous fluke infestation, was identified as a major contributory factor. NWL offer faecal screening for fluke eggs and also antibody ELISA testing on serum or milk, including bulk tank milk. Antibody testing is useful for early detection of fascioliasis, as cattle become seropositive before fluke eggs appear in the faeces, however even effectively treated cattle remain seropositive for up to 12 weeks.

Updated reference ranges

As part of our ongoing technical improvement programme, new haematology and biochemistry analysers have been installed at both our Poulton and Leeds sites. Validation exercises are now complete and reference ranges have been standardised between the laboratories. There are some minor changes, so watch out for those—our clinical pathologists at either site are happy to advise if you have any queries.